



Warning: In the following installation procedures, do not disconnect the Mediatrix 4104 while the LEDs are flashing.

Thank you for choosing the Mediatrix 4104. This Quick Start will help you to properly connect all of the cables to the Mediatrix 4104 and access its web interface.

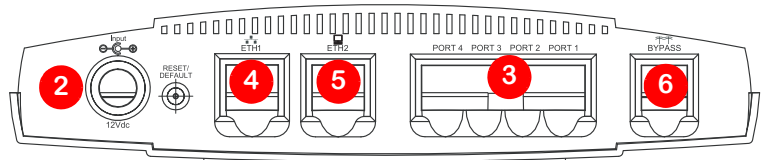
Please read the *Mediatrix 4104 Hardware Installation Guide* for detailed installation information and the *Mediatrix 4104 Software Configuration Guide* for in-depth configuration information.

Step 1 Connecting Cables


The following describes how to connect the various cables to the Mediatrix 4104.

Before you begin, make sure that you have a working network connection. Then follow these steps to install the Mediatrix 4104.

1. Before you begin, be sure that the Mediatrix 4104 is powered off.
2. Connect the power cord to its connector on the Mediatrix 4104. Do not connect the other end of the power cord to an electrical outlet.
3. Connect analog telephones or fax machines into the **Port** connectors.
Use a standard telecommunication cord with a minimum of 26 AWG wire size.
4. Connect a 10/100 BaseT Ethernet RJ-45 cable into the **ETH1** connector of the Mediatrix 4104; connect the other end to a compatible Ethernet interface that supplies TCP/IP network access (e.g., router, switch, hub or computer).
Use a standard telecommunication cord with a minimum of 26 AWG wire size.
5. Connect a 10/100 BaseT Ethernet RJ-45 cable into the **ETH2** connector of the Mediatrix 4104 and connect the other end to the network card of a computer.
You can either use a crossover or straight Ethernet cable because it performs automatic MDI / MDIX detection. Use a standard telecommunication cord with a minimum of 26 AWG wire size.
6. Connect a SCN line into the **Bypass** connector of the Mediatrix 4104 (optional).
Use a standard telecommunication cord with a minimum of 26 AWG wire size.



Step 2 IP Address Discovery or Configuration


 **Note:** This section applies to the IP configuration of the **ETH1** port.

The purpose of this section is to be able to contact the Mediatrix 4104's web interface to start with unit configuration.

Once the physical connection is complete, you will need to power on the Mediatrix 4104 and find out the IP address it is using. The Mediatrix 4104's IP address can be set either dynamically or statically. The default behaviour of the Mediatrix 4104 is to try to obtain a dynamic IP address through a DHCP server.


Dynamic IPv4 Address Discovery

Before connecting the Mediatrix 4104 to the network, Media5 strongly suggests that you reserve an IP address in your DHCP server for the unit you are about to connect. DHCP servers reserve IP addresses for specific devices by using a unique identifier for each device. The Mediatrix 4104's unique identifier is its media access control (MAC) address. The MAC address appears on the label located on the bottom side of the unit.

 **Note:** Make sure any IPv4 DHCP-provided address is outside of 192.168.0.x or otherwise, contact the unit on the LAN port and change the LAN IP address for an address that does not clash with the DHCP-provided address.

If you have not reserved an IP address, you can discover which IP address has been assigned to the Mediatrix 4104 by either:

- ▶ taking one of the telephones connected to the Mediatrix 4104 and dialing ***#*0** on the keypad. The current IP address of the Mediatrix 4104 (static or DHCP) will be stated.
 - ▶ consulting your DHCP server's logs to find out details on the DHCP lease that was given to the Mediatrix 4104.
 - ▶ using a network packet sniffer (e.g., Wireshark) to examine the DHCP messages exchanged between the Mediatrix 4104 and your DHCP server while the Mediatrix 4104 boots up.
1. If you need to discover the IP address of the Mediatrix 4104, use one of the methods listed above.
 2. Power on the Mediatrix 4104 by connecting the other end of the power cord to an electrical earthed socket-outlet. The electrical outlet must be installed near the Mediatrix 4104 so that it is easily accessible.

 **Note:** If the *Power* LED is always blinking and never turns on, this means that the Mediatrix 4104 cannot find an IPv4 DHCP server. Check that you have a DHCP server properly configured on your network. If you do not have a DHCP server, go to the section "[Default Static IPv4 IP Address Configuration](#)" on page 2.

3. Proceed with accessing the Mediatrix 4104 web interface.

Default Static IPv4 IP Address Configuration

If there is no DHCP server in your network, then the IP address has to be configured statically.

1. With a 10/100 Hub and two 10/100 BaseT Ethernet RJ-45 straight cables, connect both cables to the Hub; one of them is connected into the **ETH1** connector. The other cable links the computer to the Hub.
2. Reconfigure the IP address of your computer to **192.168.0.10** and the Subnet Mask to **255.255.255.0**. Restart the computer.
3. Power on the Mediatrix 4104 by connecting the other end of the power cord to an electrical outlet. The electrical outlet must be installed near the Mediatrix 4104 so that it is easily accessible.
4. Insert a small, unbent paper clip into the **Reset / Default** hole located at the rear of the Mediatrix 4104.
The *Power* LED will start blinking, and after a few seconds, all the LEDs will start blinking. Release the paper clip after all the LEDs start blinking and before they all stop blinking (between 7-11 seconds).
This procedure is called a partial reset. After a partial reset is performed, the Mediatrix 4104 uses the default IP address 192.168.0.1/24. Refer to the *Hardware Configuration Guide*, Chapter *Powering on the Mediatrix 4104* for details on the partial reset procedure.
5. Proceed with accessing the Mediatrix 4104 web interface.

IPv6 Link Local Address Configuration

 **Note:** This section applies if your unit supports IPv6.

You can also use the link local address to contact the unit. Note that the Mediatrix 4104 IPv6 interface is disabled by default.

1. With a 10/100 Hub and two 10/100 BaseT Ethernet RJ-45 straight cables, connect both cables to the Hub; one of them is connected into the **ETH1** connector. The other cable links the computer to the Hub.
2. Power on the Mediatrix 4104 by connecting the other end of the power cord to an electrical outlet. The electrical outlet must be installed near the Mediatrix 4104 so that it is easily accessible.
3. Insert a small, unbent paper clip into the **Reset / Default** hole located at the rear of the Mediatrix 4104.
The *Power* LED will start blinking, and after a few seconds, all the LEDs will start blinking. Release the paper clip after all the LEDs start blinking and before they all stop blinking (between 7-11 seconds).
This procedure is called a partial reset. After a partial reset is performed, the Mediatrix 4104 enables its link local IPv6 address. Refer to the *Hardware Configuration Guide*, Chapter *Powering on the Mediatrix 4104* for details on the partial reset procedure.
4. Proceed with accessing the Mediatrix 4104's web interface by using the unit's link local address.
The unit's link local address is printed on a sticker under the unit.

The link local address can be determined by using the following pattern: [fe80::290:f8ff:feXX:XXXX] where XXXXXX are the last 6 digits of the unit's MAC address. Example: The link local address for the Mediatrix 4104 with MAC address 00:90:F8:12:34:56 would be [fe80::290:f8ff:fe12:3456].



Note: On Windows, a scope ID needs to be added to the link local address ([fe80::290:f8ff:fe12:3456%11]). You can find this number by executing the 'ipconfig' command in a command prompt. Note the number at the end of the IPv6 default Gateway for the interface used to contact the unit.

On Linux, the scope identifier may be the link name or the interface number. The interface number can be determined through the Linux command line.

Step 3 Access the Mediatrix 4104 Web Interface

The Mediatrix 4104 may have one of two versions of the SIP application available. You can distinguish them by the login page used.

Version #1

1. In your web browser's address field, type the IP address of the Mediatrix 4104:
 - ✓ obtained from the DHCP server
 - ✓ obtained in ["Default Static IPv4 IP Address Configuration" on page 2](#) (192.168.0.1), or
 - ✓ obtained in ["IPv6 Link Local Address Configuration" on page 2](#)

The *Login* page opens.

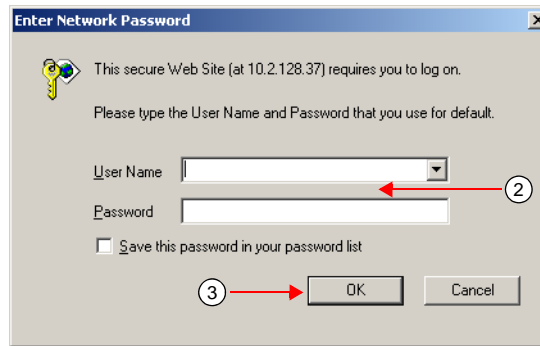
2. Enter the user name **public** and no password.
You can also use the following values:
 - ✓ **User Name:** admin
 - ✓ **Password:** administrator

3. Click **Login**.
The *System Information* web page displays.

Current Status	
System Description:	Mediatrix 4104
Firmware:	Dgw-2.0.20.265
Profile:	4104-MX-D2000-78
MAC Address:	009080603a3
Serial Number:	00196000832809635
System Uptime (D:HH:MM:SS):	1:23:29:23
System Time (DD/MM/YYYY HH:MM:SS):	15/09/2011 13:33:43

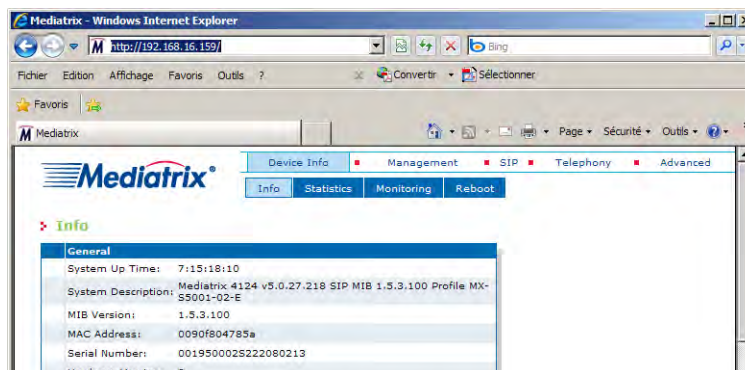
Version #2

1. In your web browser's address field, type the IP address of the Mediatrix 4104:
 - ✓ obtained from the DHCP server, or
 - ✓ obtained in ["Default Static IPv4 IP Address Configuration" on page 2](#) (192.168.0.1)The *Enter Network Password* page opens.



2. Enter the user name **admin** and the password **1234**.
3. Click **OK**.

The *Device Info* web page displays.



Step 4

End User Technical Support

Media5 works through its partners to resolve technical support issues. All end users requiring technical support are encouraged to contact their vendor directly.